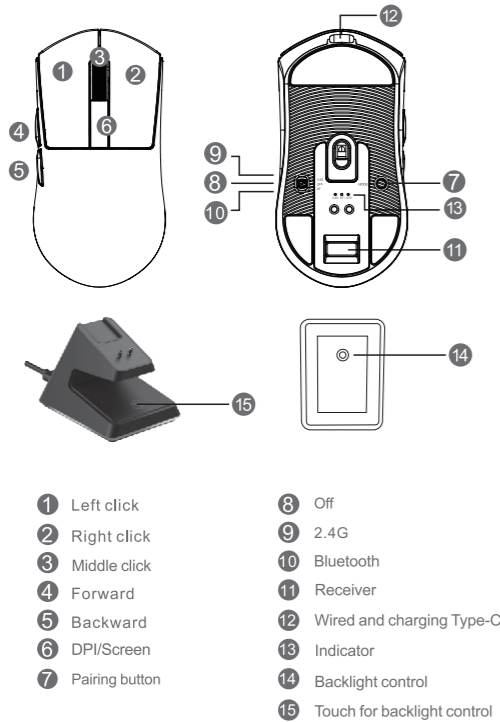


SIZE:85X115MM

Function Layout



Quick start guide

- Mouse Instructions:
- remove the USB Nano receiver
  - Plug the receiver into charging dock USB port, Plug one end of the cable into the computer USB port and the other into the dock.
  - Turn on the mouse by switching on the power switch at the bottom of the mouse
  - Wait for the computer installation to finish

- DPI setting and Indicator:
- Default DPI levels: 800-1200-1600-3200-5600-26000 DPI levels
  - Press the DPI button on the top of the mouse to cycle through the DPI levels

- Note:
- DPI levels can be adjusted by the software. Max DPI is 26000 DPI

- Power switch function:
- Switch at Position 8 : Turns off the mouse
  - Switch at Position 9 : 2.4G mode
  - Switch at Position 10 : Bluetooth mode

USB wired mode  
No matter the mode switch is in any position, after put in the TYPE-C cable, it automatically switches to the wired mode, and starts charging, and the screen displays "USB".

- 2.4G mode
- Put the power switch to "2.4G", then mouse star to work (2.4G receiver has paired with the factory default)
  - 2.4G pairing: in 2.4G mode, long press the Pairing button for 3s to enter 2.4G pairing mode (the 2.4G indicator at the bottom of the mouse blinks rapidly, the screen displays "Pairing 2.4G")

- BT mode
- Put the power switch to "BT"
  - BT pairing: in BT mode, long press the Pairing button for 3s to enter the Bluetooth search mode (the Bluetooth mode indicator at the bottom will quickly flashes, and screen displays "Bluetooth icon")

- Light mode
- Touch press the logo to cycle lighting
  - Touch hold to turn off or on

Sleep mode  
You can adjust using the software

- Battery
- In low power  
Battery icon flashes
  - Charging state  
The battery icon and percentage is displayed
  - Status on full charge  
Screen shows "100%"
  - The voltage is below 3.2V-3.0V  
Auto power-off

Note - The percentage shown is an estimate based on the battery's voltage. It is normal to see sudden changes during charging and use.  
If it drops below 3.4V, a low battery warning will appear.

Main specification

Size:	L118*W62*H37MM
Weight	56g
Switch	Huano 80M
Sensor	PAW3395
Max DPI	26000
Default DPI:	800-1200-1600-3200-5600-26000 DPI
IPS	650 IPS
Acceleration	50g (Max)
Polling rate	125 to 4000Hz
Interface	USB 2.0
Battery type	Li-ion Polymer Battery
Battery capacity	300 mAh

